

# Wedding Planning Guide





## Congratulations on your engagement!



We share your excitement and happiness as you make your wedding plans and begin this new adventure together! Marriage is a gift from God and we are anxious to serve you with your planning process. The Wedding Ministry Team wants your wedding to be a joyous day!

This ceremony planning guide will answer many questions as you begin planning your wedding. If, after reading this guide, you decide to hold your wedding at Eastview or reserve an Eastview pastor for your ceremony elsewhere, please register online at [eastview.church/resources/weddings](http://eastview.church/resources/weddings) or complete the registration form located in the back of this planning guide and drop it off with your \$50 deposit to the church office.

**Please do not make any vendor or subsequent commitments until your date and time are confirmed by the Eastview Wedding Ministry Team and you have met with one of our Pastors.**

We look forward to working with you on this joyous occasion!

Sincerely,

Marla Smith  
Care Coordinator

O: 309-451-5057

E: [marlasmith@eastview.church](mailto:marlasmith@eastview.church)

## Wedding Planning Checklist

- 1. Read Eastview's Wedding Planning Guide.
- 2. Complete the Wedding Registration Form and submit \$50 deposit.
- 3. You will be contacted to schedule your appointment with the Pastor of Member Care.
- 4. Upon receiving your on-line assessment, immediately complete your Prepare/Enrich Assessment.
- 5. Pastor of Member Care will assign a premarital mentor couple. Schedule and begin premarital mentoring sessions.
- 6. Complete an initial meeting with your assigned Wedding Coordinator.
- 7. File for and obtain your marriage license within 60 days of your scheduled wedding ceremony.
- 8. Schedule a meeting with your Officiating Pastor (if desired).
- 9. Schedule final meeting with Wedding Coordinator (3-4 weeks prior to wedding date) NOTE: Final Decorating Plan is due at this meeting.
- 10. Prepare and submit your ceremony music on a flash drive two weeks prior to your wedding date. Or, select music from the designated Spotify playlist.
- 11. Finalize attendees for wedding rehearsal and invite them.
- 12. Complete premarital mentoring sessions.
- 13. Confirm all wedding participants' arrival time for rehearsal and wedding day (at least 1 hour prior to the ceremony.) Remember to emphasize timeliness for both the rehearsal and wedding day.

## Table of Contents



- Reservations & Scheduling .....2**
- Selecting a Pastor .....4**
- Premarital Mentoring ..... 6**
- Ceremony Preparation ..... 7**
- Wedding Rehearsal ..... 8**
- Marriage License .....9**
- Wedding Day Details ..... 10**
- Wedding Policy ..... 11**
- Ceremony Floor Planner ... 12**
- Photo Gallery ..... 13**
- Registration Form ..... 15**
- Map ..... 17**





## Reservations & Scheduling

Eastview Christian Church performs wedding ceremonies for its members and regular attenders. Once you have read this Wedding Planning Guide, please complete the Wedding Registration Form online at [eastview.church/resources/weddings](http://eastview.church/resources/weddings) or in this planning guide and turn it into the church office with your \$50 deposit. Please do not make any vendor or subsequent commitments until your date and time are confirmed by the Wedding Ministry Team.

You will receive notice as soon as possible from the Wedding Ministry Team as to the availability of your requested date and ceremony time for your marriage ceremony if you are requesting a location within our facility.

The pastor for your ceremony will be determined as early as possible based on pastoral availability. To allow adequate time for premarital mentoring, wedding reservations are accepted for ceremonies five months to one year in advance.

### CEREMONIES

Weddings at Eastview will be held in our Sanctuary space at the Normal Campus. Alternate locations include the Patio, booked in conjunction with the Sanctuary in case of inclement weather, and the Prayer Chapel in the Upper Atrium (10 people or less). Weddings can also be scheduled at the Bloomington Campus location for those that attend services at that location. Weddings are scheduled during the following days and times:

- FRIDAYS:** 3:00PM-7:00PM (with a Thurs. evening rehearsal)
- SATURDAYS:** 9:00AM - 5:00PM (ceremony starts between 11:00AM and 2:00PM).  
Decorating, clean up of decorating and photos in the Sanctuary take place within this time.
- SUNDAYS:** None (Due to the timing of our services, wedding times are not available on Sundays.)
- WEEKDAYS:** By request, depending on building availability.



### FEES

The total cost for having a wedding at Eastview is \$750.00. A deposit of \$50, payable to Eastview, is due with your wedding registration form to hold your reservation. The \$50 deposit is refundable if Eastview is unable to perform the ceremony. The \$750 includes the following: pastoral honorarium, wedding coordinator services, technical services, building services and six premarital mentoring sessions. All fees (excluding the initial \$50 deposit) will be paid to the wedding coordinator at the final planning meeting or by your rehearsal date. Please make your check payable to Eastview Christian Church or you may pay online through your registration account. *\*\*Note: All musician payments are the couple's responsibility.*

### OFF-SITE WEDDING CEREMONIES

If you are requesting an Eastview Pastor to officiate your ceremony in another location within McLean County, everything in this booklet still applies. Note: the technical services fee will be waived. Premarital mentoring and the Eastview wedding coordinator services are still required. The total fee for an off-site wedding within McLean County is \$550. For weddings outside of McLean County, we cannot guarantee the availability of an Eastview pastor. Weddings outside of McLean County will incur a mileage charge for both the pastor and wedding coordinator's travel (standard IRS mileage reimbursement rates apply: \$0.72.5 per mile). Hotel and travel expenses will be the responsibility of the wedding party for weddings more than one hour outside of McLean County.





## SELECTING A PASTOR

E

Eastview has many pastors to officiate weddings. Once your wedding has been approved, there will be an initial meeting with the wedding coordinator to outline your ceremony.



**COOPER SMITH**, *Associate Pastor of High School: Worship*

Cooper has been on staff at Eastview since 2019, but has been part of the church family since growing up here as a kid. He loves working with high school students and seeing them grow in their faith. Cooper enjoys Chicago Bears football, track and field, good coffee, and spending time with friends and family. For Cooper, Psalm 23 has been a steady source of rest and reassurance in both joy and challenge.



**JACK PATTERSON**, *Pastor of Guest Services*

At Eastview since 2010, Jack leads guest services and safety & security operations. Jack is married to his high school sweetheart, Crystal. He loves drinking coffee and eating ice cream with his family of adult kids, their spouses, and several grandchildren!



**JASON SMITH**, *Next Gen Pastor*

Jason has been working with young people for over three decades. He joined the Eastview staff in 2003 and is currently the Next Gen Pastor. He and his wife Kim have been married since 1995 and have raised two sons and a daughter. Jason loves the outdoors, professional football, and most of all, spending time with his wife and kids.



**JASON SNIFF**, *Pastor of Small Groups*

Jason has been on staff since 2010. He and his wife Nicole have six awesome kids, one amazing daughter-in-law, and a beautiful grand baby. He enjoys family games, camping at the Dunes, hiking in CO, and spending time hearing people's stories. The passage from Galatians 4:5-7, ". . . We are adopted as sons and daughters of God . . ." provides immense hope to his life.



**JOSH JACOBS**, *Pastor of Young Adults*

Josh is the Pastor of Young Adults at Eastview and has been on staff since 2019. Josh and his wife Madisen love spending time with friends and family, being in nature, and running around with their dog Beau! In Josh's free time he is a massive Cardinals fan and loves to play golf.



**MARK DOSSETT**, *Bloomington Campus Pastor*

Mark's connection to Eastview goes back to 1987, when he found his home here as a recent graduate of Illinois State and a newbie to State Farm. He has been married to his wife, Karen for over 35 years and has four grown boys, two daughters-in-law, and several grandchildren. Mark wants to do all he can to help each person live out the rich and beautiful life God has in mind for them and love Him with her/his whole heart!



**MARK WARREN**, *Executive Pastor*

Mark has been on staff at Eastview since 1993. He has had various roles from college pastor, small groups pastor, guest services, operations, and currently is one of our executive pastors. Mark is married to his wife, Rachel, and has four adult children, and three grandchildren. He loves to spend time playing games with his family, hiking, watching Chicago sports teams and March Madness.



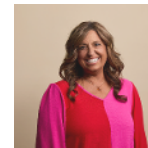
**MATT FOGLE**, *Pastor of Spiritual Formation*

Matt has served as a pastor for over twenty years. He is passionate about creating space for couples and families to slow down, listen deeply, and notice God's presence in their journey together. He enjoys the outdoors, good coffee, and time with his wife and four kids. Psalm 23 is a favorite scripture, reminding him of God's steady guidance and care.



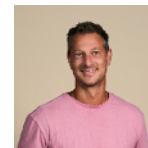
**MATT MCCLANE**, *Pastor of Junior High Students*

Matt and his family moved to Bloomington-Normal in November of 2018. He has been in student and family ministry since 2005 and is grateful for the opportunity that he has to pastor students at Eastview. Matt loves life when the Michigan Wolverines and St. Louis Cardinals are winning. Matt and his wife Anne have two children, Rilyn and Landon.



**NICKI GREEN**, *Pastor of Involvement*

Nicki came to Eastview as the Pastor of Involvement in January of 2005. She over-sees everything from when a guest enters our campus until they become an active, engaged, multiplying part of the church. Nicki has been married to her husband, Greg, since 1996 and they have three young adult children. Nicki loves to connect people to God and to the church!



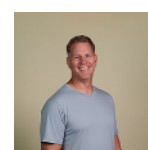
**TYLER HARI**, *Executive Pastor*

A Bloomington-Normal native, Tyler has attended Eastview for almost his entire life. Tyler has been married to Jessica for over 20 years and has four kids. His family is passionate about all things sports, adoption, missions, having fun with friends, and not taking themselves too seriously. The Haris are grateful to call Eastview their church home.



**ZACH THOMPSON**, *Pastor of High School Students*

It was through Zach's years in Eastview Student Ministry and studying at Lincoln Christian University that he found a passion for sharing the gospel message through preaching and teaching as well as a desire to show others that their identity can rest in the grace and truth of Jesus. In his spare time, Zach enjoys hanging out with his wife and son, playing sports, and rooting for the Kentucky Wildcats and Chicago Cubs.



**BRANDON GRANT**, *Lead Pastor*

Brandon became the Lead Pastor of Eastview in July 2024. Prior, he was Eastview's college pastor for seven years before moving to San Diego in 2012 to launch Rise City Church. Brandon and his wife, Jamie, were married in 2006, and have four children. Brandon enjoys a great cup of coffee, engaging movies, attending or coaching his kid's activities, grilling, and experiencing adventures with his wife and family.



## PREMARITAL MENTORING

It is our belief that preparation for marriage provides a solid foundation on which the marital relationship can be built. Therefore, premarital mentoring sessions are required prior to any ceremony being performed. The Pastor of Member Care will meet with you and assign you to a trained mentor couple. We utilize an extremely effective curriculum called Prepare-Enrich. Prepare-Enrich begins with an inventory completed on-line that identifies a couple's strength and growth areas. It is one of the most widely used programs for premarital counseling and premarital education. Based on a couple's assessment results, a trained mentor couple provides 6 sessions in which they help the couple to understand their results as they are taught proven relationship skills. The program helps couples:

- explore strength and growth areas
- strengthen communication skills
- identify and manage major stress points
- resolve conflict using the Ten Step Model
- develop a more balanced relationship
- explore family of origin issues
- discuss financial planning and budgeting
- establish personal, couple, and family goals
- understand and appreciate personality differences

Your Prepare-Enrich results are kept confidential and are only viewed by the Pastor of Member Care, your mentor couple, and your officiating pastor.

Your premarital mentoring may begin up to one year in advance of your wedding date, to allow for additional sessions as needed and allow you to focus on the details of your wedding as the date arrives. Your mentor couple may recommend several weeks between some of the sessions to allow for homework to be completed. You, the Pastor of Member Care, and your officiating pastor will make any decisions and recommendations together.



## CEREMONY PREPARATION

### INITIAL PLANNING MEETING

Once your wedding has been approved, you and your assigned wedding coordinator will meet to outline your wedding ceremony and discuss your plans for your ceremony, music, and decorations. The wedding coordinator will then provide you a copy of your ceremony and you and she will discuss any changes or updates that need to be made. This will be your first of two meetings with your day-of wedding coordinator.

### WEDDING COORDINATOR

Your wedding day is your day to enjoy! Communicate your needs to your Wedding Coordinator. She is there to assist you and help make this day a special one. Relax and rely on her gifts of administration and hospitality. The Wedding Coordinator will arrive 2 hours prior to the ceremony and she will assist you in a variety of ways.

#### **Her responsibilities include:**

- Verifying placement of all staging items (cross, candles, music stands & equipment, flowers, guest book etc.)
- Distribution of flowers to the wedding party, parents, and honored guests
- Verifying guest seating arrangements
- Cueing ushers when to begin seating, and when and where to seat family members
- Closing guest book and cueing guest book attendant when to be seated
- Cueing attendants and bride for processional
- Getting bridal party down the aisle
- Seating late guests

### FINAL MEETINGS

Final meetings will be held between two and four weeks prior to the wedding. One meeting may be between the couple and officiating pastor. One meeting will be between the couple and the Wedding Coordinator. Items due at this meeting include: Final ceremony outline, decorating plan (outline given to you by your coordinator) and final music on a flash drive (if using prerecorded music). The marriage license and fees can be given at the meeting with the wedding coordinator (or by your rehearsal date). At this time, all logistical plans for the wedding are finalized along with a final decoration plan including which church-owned items will be utilized in the ceremony (*see available items at the end of this booklet.*)

### CEREMONY SAMPLE ORDER

- Prelude
- Processional
- Welcome & Opening Prayer
- Giving of the Bride
- Scripture Reading
- Wedding Message
- Exchange of Vows
- Exchange of Rings
- Lighting of Unity Candle
- Pronouncement of Marriage
- Introduction of the Couple
- Recessional





## WEDDING REHEARSAL

The Rehearsal will be held the evening before the wedding and will take one hour. The rehearsal finalizes the Wedding Ceremony with a walk-through of the entire wedding with the Wedding Coordinator. Responsibilities, staging, and timing details are explained and practiced by participants.

### **Attendees at the rehearsal are:**

- Bride & Groom
- Best Man & Maid/Matron of Honor
- All attendants
- Flower girl & ring bearer (if part of the ceremony)
- Musicians and Readers (optional, see below)
- Ushers
- Parents of the bride and groom
- Grandparents of the bride and groom (optional)

### **SPECIAL NOTES**

- Musicians and readers are welcome at the rehearsal for timing details, their presence is not required, as a sound technician will not be present. **All sound checks are done one hour prior to the wedding ceremony.**
- The officiating Pastor may or may not attend the rehearsal, it will be conducted by the wedding coordinator.

### **Punctuality:**

Punctuality is critical to the success of the rehearsal and wedding. Please encourage all participants to be on time for the rehearsal and wedding. Rehearsals that start late will still end at the scheduled time. The Wedding Ceremony will also start on time unless there is a medical emergency.

### **Ceremony Music:**

- Absolutely no changes in ceremony or music are permitted the day of the rehearsal or between the rehearsal and ceremony. If an emergency circumstance occurs with a scheduled musician, the sound tech and wedding coordinator will assist the bridal party in selecting prerecorded music from a selection list.
- The Sound Tech will be scheduled and prepared by the Wedding Coordinator.
- Musician selection, scheduling, and payment is the couple's responsibility. Ask for our list if you need assistance in locating a musician.



## OBTAINING YOUR MARRIAGE LICENSE

A marriage license can be obtained from:

McLean County Clerk

Located in the McLean County Government Center at:

115 E. Washington Street, Room 102, Bloomington, IL 61701

309-888-5190

[mcleancountyil.gov](http://mcleancountyil.gov)

### **GENERAL INFORMATION:**

- You will need a license from McLean County to be married at Eastview Christian Church.
- An appointment is needed to apply for your license at the McLean County Government Center.
- The license is valid the following day and is good for 60 days.
- The marriage application process will take approximately 20 minutes.
- The cost is \$65.00 payable by check or money order made out to McLean County Clerk.
- Both the Bride and Groom **must** be present at the application appointment.
- A valid driver's license, state issued ID, or passport **is required** for identification.
- If either the Bride or Groom have been married before, the County will need to know how the marriage ended. If it was dissolution, the County will need to know the date and county, and/or state of the dissolution.
- You will need to know your parents' addresses and states where they were born.
- You will need your social security numbers.

### **NOTES:**

- No blood tests are required in Illinois.
- Anyone can receive a copy of your Marriage License.
- Only the Bride or Groom may get a copy of the Marriage Application.
- You will need certified copies of your marriage license to change your name on your Social Security Card, Driver's License, and possibly several other places. You may prepay for these copies during your marriage license appointment.
- When McLean County receives the signed marriage license back after your ceremony, they will mail you the number of copies you requested.



## WEDDING DAY DETAILS



The entire wedding party, photographer and florist should arrive at the church at least 60 minutes prior to the ceremony, depending on your pre-wedding photography session. **Please do not have flowers or rented items delivered before you plan to arrive, or have someone there to meet the delivery.** You must be sure that your order has been satisfactorily delivered. All personal items and rental property must be removed from the church promptly following the ceremony. We do not have refrigerated storage space for flowers or food. We do not have extra storage space available to keep your personal or rented items on-site following the ceremony. Please encourage all participants to be on time for the wedding. The Wedding Ceremony will start on time unless there is a medical emergency.

### PHOTOGRAPHY

Flash photography is permitted during the ceremony as directed by you. You may wish to remind guests not to use flash photography that may disrupt your photographers' photos. **Photography time for your "First Look" and family pictures may take place anywhere on our campus and may take place in the Sanctuary only during your scheduled block of time.**

### CEREMONY SET-UP

Weddings at Eastview will primarily take place in the Sanctuary. The Sanctuary can seat 500 guests on the lower level and 700 including the balcony. The black stage curtain will remain closed during the ceremony to hide the Sunday morning set-up behind the curtain. Up-lighting color is chosen by the couple.

### STAGING ITEMS AVAILABLE FOR USE (SEE PAGE 14)

A cross, communion, unity candle, and our ceremony table may be used on the stage. We have white or black table cloths available for the ceremony table and guest book table. Flameless candles are also available for use. Wax candles may be used only in containers or with trays beneath them. No live flames are allowed in the aisles. Non-drip candles can be used on the ceremony table. All candles, trays, and containers should be approved by the Wedding Coordinator.

### SET-UP, TEAR DOWN, AND DECORATING

The Building Services staff will set up your tables and staging items as prearranged with the wedding coordinator. All decorations, accessories, and candles (if not using ours) are provided by the wedding party and must be approved by the wedding coordinator in your submitted decorating plan. All decorating items must be removed immediately following the wedding ceremony and cannot be stored overnight following the wedding. All decorating plans need to be approved by the wedding coordinator at your final meeting (by two weeks prior to the wedding date).

### GETTING READY ROOMS

Two rooms are provided—one for the bridesmaids and one for the groomsmen. Each room has mirrors, tables, and chairs along with hooks for hanging formalwear. Food and beverages are allowed in each room. You will have access to these spaces starting at your rehearsal. Personal items may be locked in these rooms overnight.

### CEREMONY ELEMENTS

- **Communion:** If you choose communion during your service, we provide standard Sunday morning communion elements for you. You may provide alternative elements if desired.
- **Send Off:** No birdseed, rice, real flowers, or confetti is permitted to be thrown inside or outside of the building. Fake petals may be sprinkled down the aisle. Bubbles or bells are permitted outside the building for your exit if desired.

### FOOD AND BEVERAGES

These items are allowed in the rooms you get ready in and in the Atrium on both levels. No food or beverages are allowed outside of the designated areas. All food and drink along with personal property should be removed from all rooms immediately following your ceremony.

### OTHER FACILITY POLICIES

Please encourage your guests to respect your church home. Smoking is not permitted anywhere in the building. Alcohol and non-prescription drugs are not allowed on the church premises.



## EASTVIEW WEDDING POLICY



Marriage was created by and is a gift from God to be enjoyed by one man and one woman for a lifetime! Since God ordained marriage and created those involved in it, He desires to be a part of each marriage to add His direction and blessing. As we read God's Word in the Bible, we are confronted with basic facts and principles which must be understood and applied if joy and fulfillment is to be experienced in marriage. Ignoring these principles is to ignore God and His design and results in marital frustration and/or divorce.

Because Eastview is committed to God, His principles, and building strong marriages, the following scriptures and guidelines shall serve as principles for marriage. These policies govern Eastview Christian Church's pastors. Some circumstances require discretion regarding implementation.

### 1. Scriptures concerning marriage which form the basis for the decisions made regarding weddings performed at Eastview and by our pastors:

- |                         |                   |                        |                     |
|-------------------------|-------------------|------------------------|---------------------|
| - Genesis 2:18; 2:21-24 | - Matthew 5:31-32 | - Matthew 19:3-12      | - Mark 10:2-12      |
| - Luke 16:18            | - Romans 7:1-3    | - I Corinthians 7:1-40 | - Ephesians 5:21-33 |
| - Colossians 3:18-19    | - I Peter 3:1-22  |                        |                     |

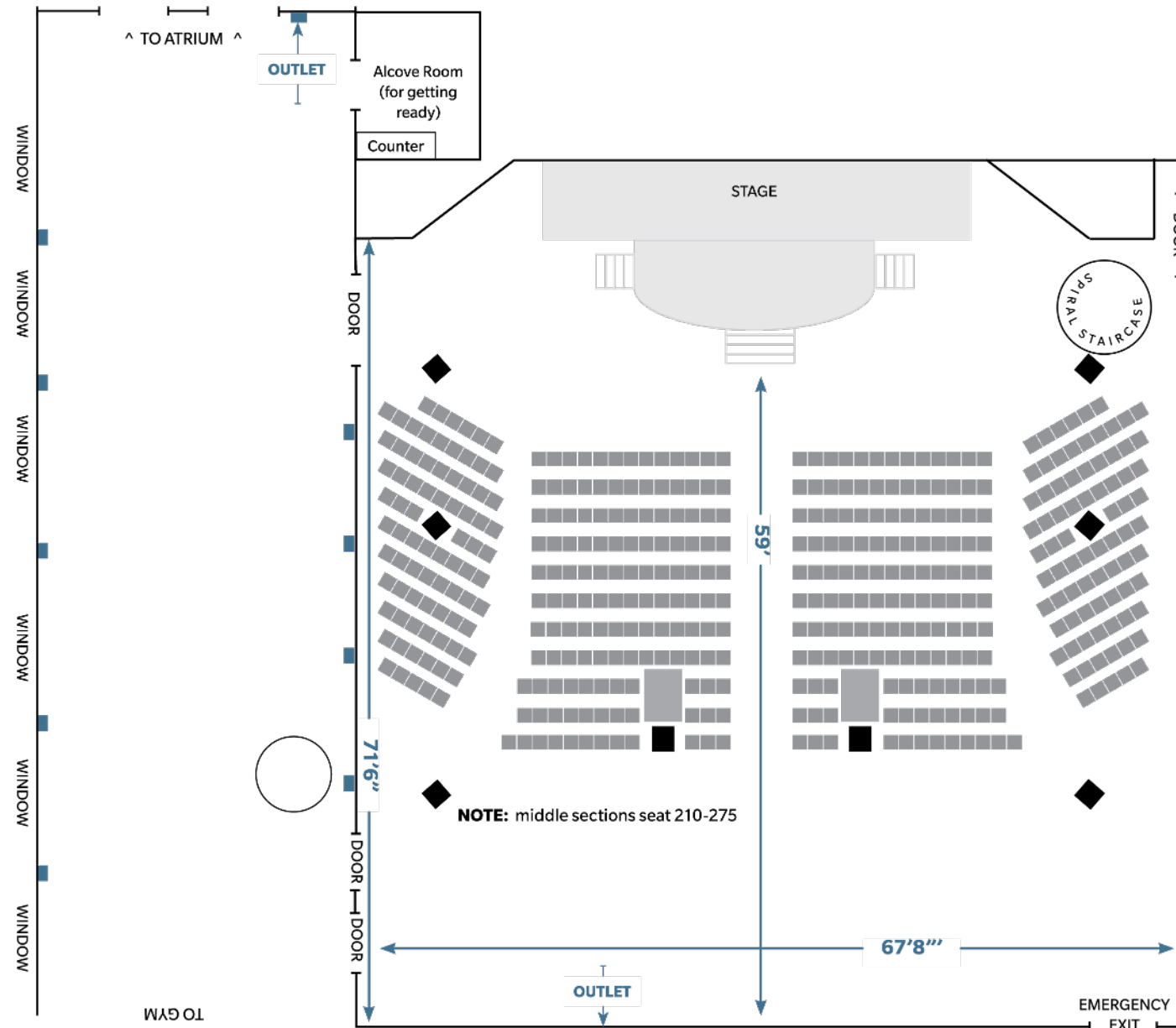
### 2. Who can be married at Eastview and by whom?

- ▶ We will marry those who are members of Eastview Christian Church or who have been active in worship attendance for at least six months.
- ▶ Eastview adheres to the Biblical definition of marriage based on God's word that indicates marriage is a Holy Covenant between one man and one woman. We will not officiate or host a marriage or marriage-like ceremony outside of this definition.
- ▶ No pastor of Eastview will marry a couple if one of the other pastors of the church has declined to perform the ceremony for reasons other than scheduling conflict.
- ▶ All weddings at Eastview will be supervised by a wedding coordinator. An Eastview pastor must officiate the wedding. However, exceptions can be made for family members of the bride or groom who are clergy. In these cases, the Pastor of Member Care must approve the wedding and have a conversation with the officiating pastor regarding church affiliation and role. The ceremony outline will be sent to the officiating pastor by the wedding coordinator.
- ▶ Couples who are living together or are sexually active will meet with the Pastor of Member Care for Biblical counsel before a decision is made regarding officiating their wedding.
- ▶ Couples who have been divorced (either both or one) within the last twelve months will discuss the circumstances in an initial meeting with the Pastor of Member Care and/or officiating Pastor.
- ▶ In the case of premarital pregnancy, the couple will meet with the Pastor of Member Care and/or the officiating Pastor for Biblical counsel and encouragement before making a decision regarding officiating the wedding.
- ▶ Marriage ceremonies will not be conducted if either the bride or the groom come to the wedding under the influence of alcohol or drugs (other than those prescribed by a physician). Any member of the wedding party who comes to the wedding under the influence of alcohol or drugs will not be allowed to participate in the ceremony.



# CEREMONY FLOOR PLANNER

Your coordinator is here to help you, please ask her for tips on how to achieve the look you'd like to have.



**NOTE:** middle sections seat 210-275

## ✓ TO COMPLETE:

- Stage decorations & placement
  - Unity candle table
  - Other: \_\_\_\_\_
- Aisle decorations and placement
- Reader placement
- Musician placement
- Curtain uplighting color: \_\_\_\_\_
- Entrance decorations
- Guest book table decorations
- Other \_\_\_\_\_

## FREE EASTVIEW RESOURCES AT NORMAL CAMPUS:

### Tables:

- Stage table
- Round bistro (guestbook table)
- Rectangle table

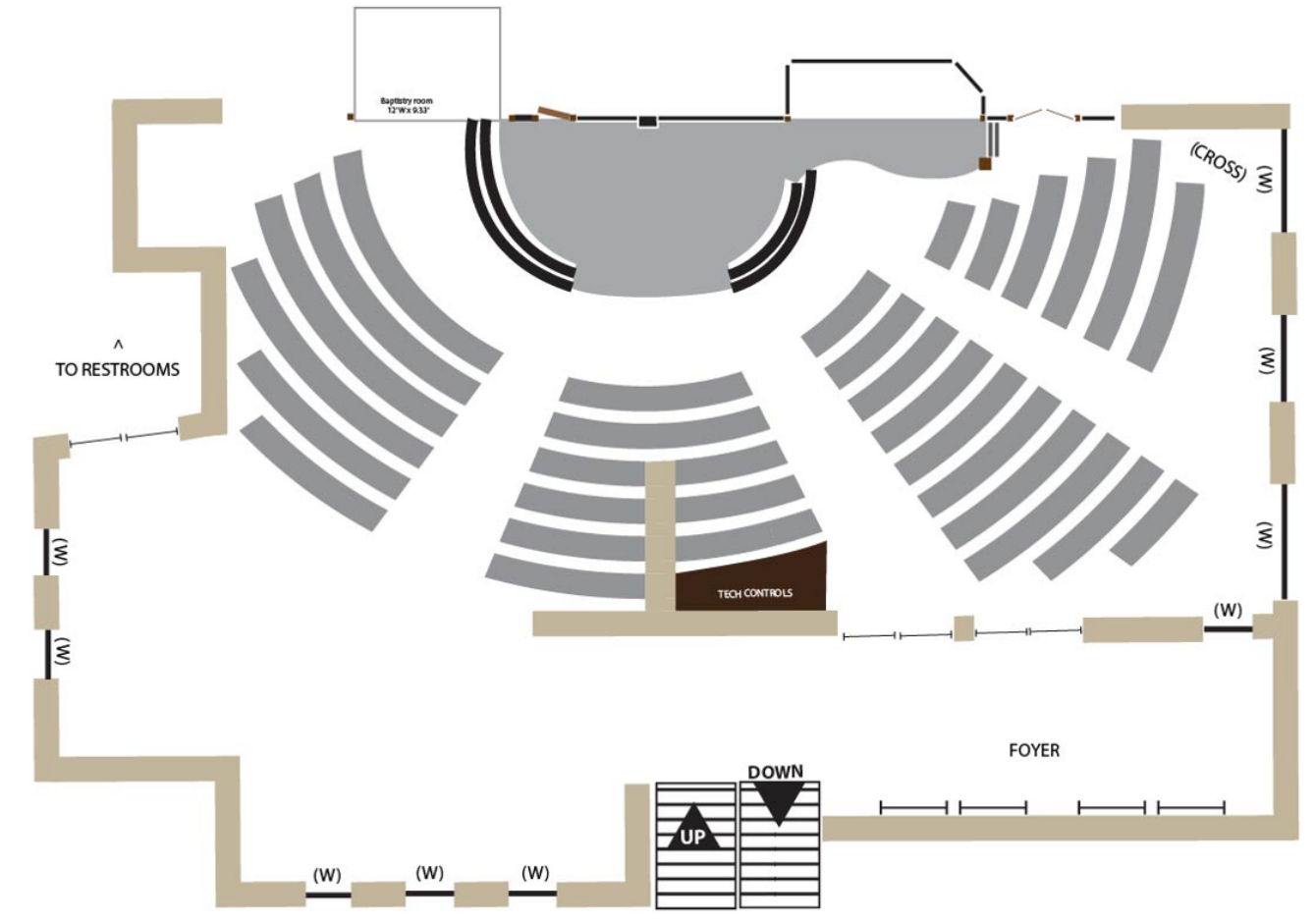
### Other:

- Assortment of flameless candles (couple provides batteries)
- Communion chalice and plate
- Silver unity candle holder (couple provides candles)
- Tablecloths (black, white, round, rectangle)

# BLOOMINGTON CAMPUS SANCTUARY



You may select Eastview's Bloomington campus as your wedding location if you regularly attend this campus. This Sanctuary seats approximately 225 guests.





## PHOTO GALLERY



# WEDDING REGISTRATION FORM

*Please return this page with your \$50 deposit to the church office.*

TODAY'S DATE: \_\_\_\_\_

**WEDDING DATE AND TIME REQUESTED:**

**1ST CHOICE:** Date: \_\_\_\_\_ Time: \_\_\_\_\_

Please list desired ceremony time. Decorating & clean up of decorations takes place within given time.

**2ND CHOICE:** Date: \_\_\_\_\_ Time: \_\_\_\_\_

Please list desired ceremony time. Decorating & clean up of decorations takes place within given time.

Ceremony Location Requested: (circle one) Normal Campus Sanctuary • Bloomington Campus Sanctuary • Other: \_\_\_\_\_

**Please do not commit to any outside vendors, for your reception or otherwise, until you receive confirmation from our Wedding Ministry Team that your wedding and date are approved.**

Bride's Name: _____ Address: _____ _____ Preferred Contact Phone Number: (Home, Work, Cell) _____ E-Mail: _____ Church Affiliation: _____ Member or Regular Attender? _____	Groom's Name: _____ Address: _____ _____ Preferred Contact Phone Number: (Home, Work, Cell) _____ E-Mail: _____ Church Affiliation: _____ Member or Regular Attender? _____
---	---

**Plan to do premarital mentoring at Eastview?** (circle one) Yes No If no, alternate location: \_\_\_\_\_

**Number of guests expected to attend:** \_\_\_\_\_

**Number of wedding attendants for Bride:** \_\_\_\_\_ **for Groom:** \_\_\_\_\_

**Will there be a reception?** (circle one) Yes No Location: \_\_\_\_\_

**Name of Pastor you would like to officiate your wedding:**

\_\_\_\_\_ First Choice \_\_\_\_\_ Second Choice \_\_\_\_\_

**Couple's Address following the ceremony:**

Same as Bride or Groom's address above? (circle one) BRIDE or GROOM

New Address: \_\_\_\_\_ Street \_\_\_\_\_ City \_\_\_\_\_ State \_\_\_\_\_ ZIP \_\_\_\_\_

FOR OFFICE USE: Date received: \_\_\_\_\_ Deposit received: \_\_\_\_\_ Final payment received: \_\_\_\_\_

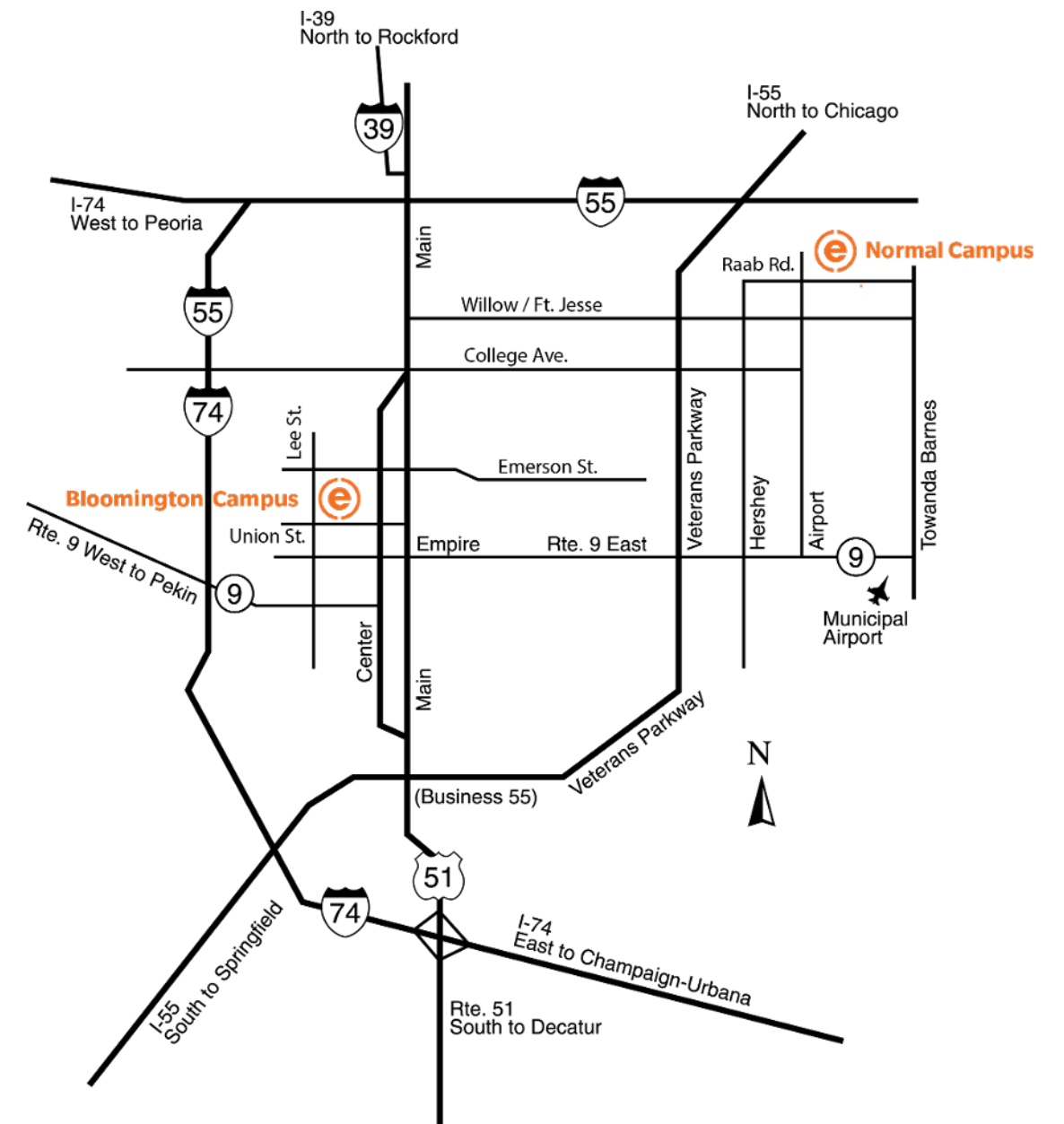




## MAP TO EASTVIEW CAMPUSES

**Normal Campus:** 1500 N. Airport Rd. | Normal, IL 61761

**Bloomington Campus:** 401 Union St. | Bloomington, IL 61701





**Normal Campus:** 1500 N. Airport Rd. | Normal, IL 61761  
**Bloomington Campus:** 401 Union St. | Bloomington, IL 61701  
eastview.church | 309-451-5000